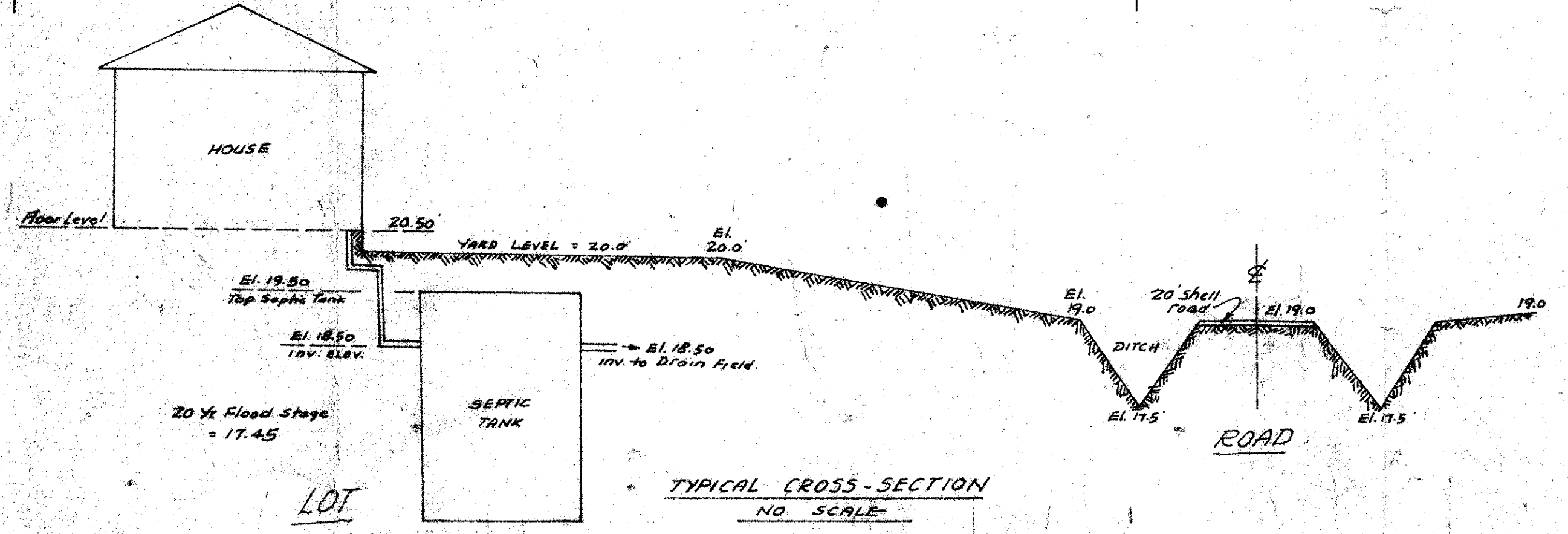
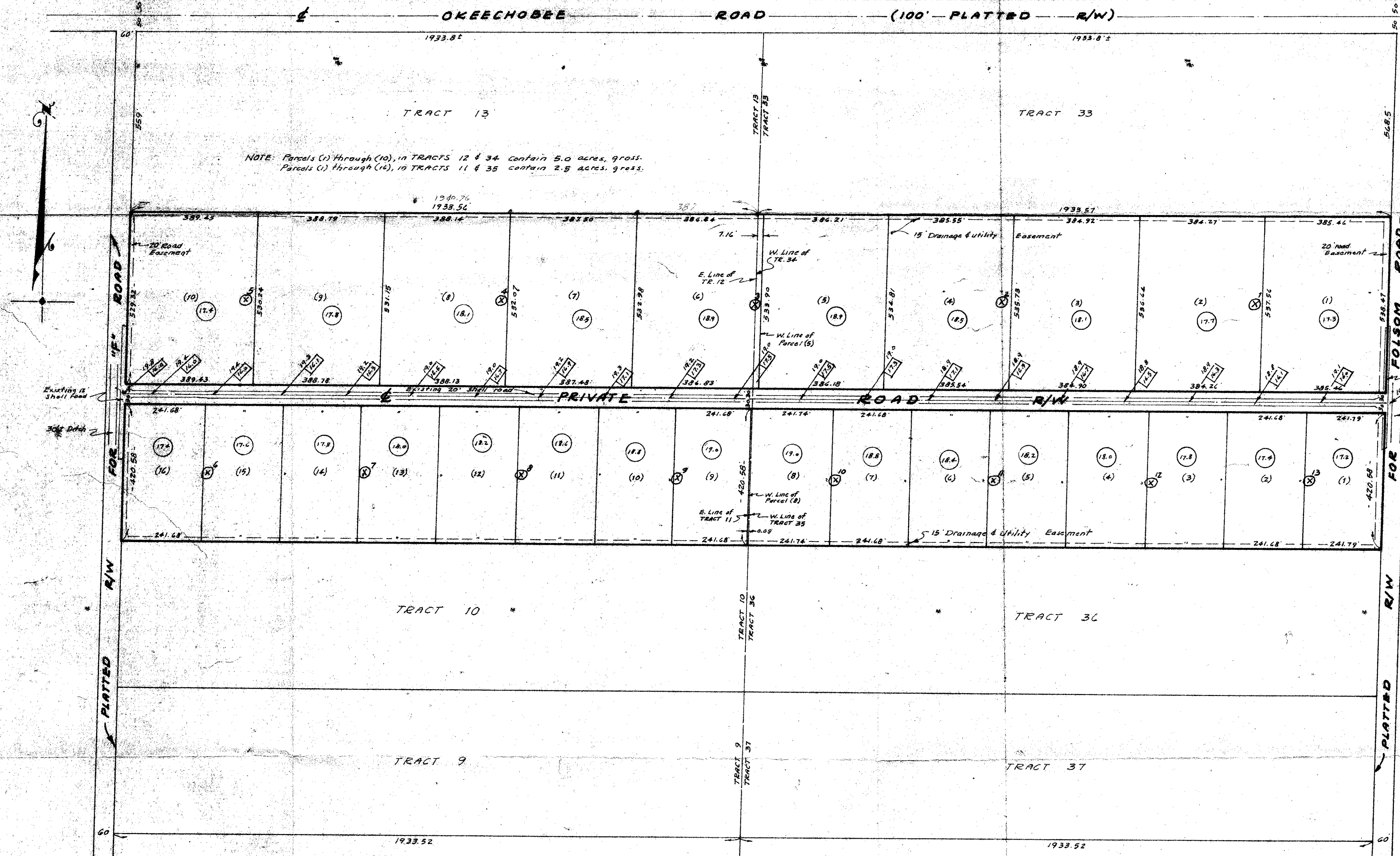


PERCOLATION & SOIL TESTS
 Taken as indicated. Percolation tests were made in accordance with method outlined in Chapter 170 C-41, of Fla. State Statutory Code. Soil depths are measured from the existing ground level at each location.

1. Perc. Rate = 0.83 min/inch SOIL: 0.0-0.8 Gray sand 0.8-1.5 Yellow " " 1.5-3.0 Marl 3.0-3.5 Shell 3.5- rock Water Table = 3.0'	2. Perc. Rate = 1.08 min/inch SOIL: 0.0-0.7 Gray sand 0.7-2.5 Yellow " " 2.5-3.0 Marl 3.0-4.2 Shell 4.2- rock Water Table = 2.5'	3. Perc. Rate = 1.4 min/inch SOIL: 0.0-0.8 Gray sand 0.8-1.3 Brown " " 1.3-2.9 Marl 2.9-3.3 Shell 3.3- rock Water Table = 2.5'	4. Perc. Rate = 1.78 min/inch SOIL: 0.0-0.6 Black sand 0.6-1.2 Sandy marl 1.2-2.0 Yellow sand 2.0-2.5 White sand 2.5-2.7 Marl 2.7-3.4 Shell 3.4- rock Water Table = 2.0'	5. Perc. Rate = 1.25 min/inch SOIL: 0.0-0.5 Gray sand 0.5-1.0 lt. brown sand 1.0-2.0 Yellow " " 2.0-2.3 Brown " " 2.3-2.7 Marl 2.7-3.0 rock Water Table = 2.3'	6. Perc. Rate = 0.98 min/inch SOIL: 0.0-0.8 Gray sand 0.8-1.5 White " " 1.5-1.8 Brown " " 1.8-3.8 Marl 3.8- rock Water Table = 3.0'
--	--	--	--	---	---



DESIGN DATA
 25 year flood stage on West Palm Beach Canal occurred October, 1947 at 17.15' Mean Sea Level, prior to installation of pumps at Loxahatchee Groves. In addition, the Soil Conservation Service, U.S.D.A. will hold hearings on August 27, 1969, for PL566 Project, which will improve drainage and pumping in the area. In addition, the Flood Control District and the Corps of Engineers have had approval of the project to deepen the West Palm Beach Canal and install more adequate discharge facilities at Lake Worth. The present maximum operating level in the canal is 14.00 feet, and the future design (2 years) of 20 year flood level is 14.00 feet. Thus our estimate of 15.15 feet, M.S.L., is conservative.

NOTES:
 1. Elevations existing 20' shell road shown thus -
 Elevations of bottom of swales shown thus -
 2. Loc. of Soil & percolation tests -
 3. All elevations based on U.S.C. & G.S. Datum
 4. All lots in Tracts 12 and 34 contain 5.0 acres, gross
 5. " " " 11 and 35 " 2.5 " "
 6. All lot corners staked with 1/2" pipe.

ur03821gr
 LOXAHATCHEE GROVES TR 11,12,34 & 35
 BK F

EARL H. MARTIN REG. CIVIL ENGINEER FLA. CERTIFICATE NO. 5153 	JOHN P. DAVIS & ASSOCIATES, INC. REGISTERED ENGINEERS AND SURVEYORS WEST PALM BEACH - LAKE WORTH, FLORIDA
	Proposed SUBDIVISION OF: TRACTS 11, 12, 34 & 35, BLOCK "F" LOXAHATCHEE GROVES <small>(PLAT BOOK 12, Pg. 23)</small> LOXAHATCHEE, PALM BEACH COUNTY, FLORIDA FOR LOXAHATCHEE INVESTMENTS, LTD.
	AUGUST, 1969 SCALE: 1" = 200' REF. REC. PLAN 12-23 P.B. 1-21